

SMARTCASE™ S511

Chassis Kit Solution



Mini-STX Motherboard
D3714-R, D3714-V, D3724-R

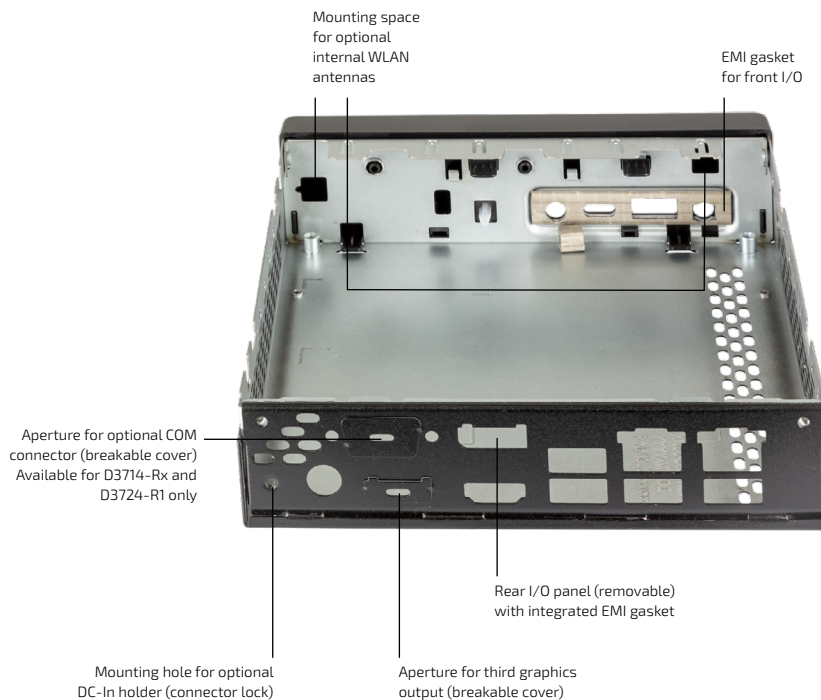
FOR

Industrial chassis for enhanced operating temperature range

- Ultra-Compact Design
- 36 x 147 x 165 mm
- Front & Rear USB
- Horizontal or Vertical Operation
- VESA- and Wall Mount Option

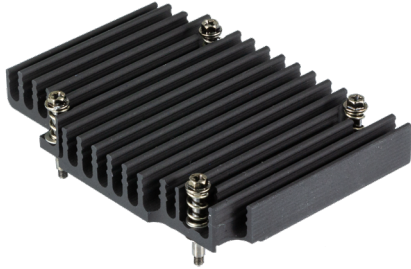
CHASSIS DATA	DIMENSIONS COLOUR WEIGHT	36 x 147 x 165 mm (W x H x D) black ~ 0.4 kg
ENVIRONMENTAL CONDITIONS	OPERATING TEMPERATURE*	Passive Cooling: -10 °C ... +35 °C (max. 8 W/10 W TDP, horizontal position) ** -10 °C ... +40 °C (max. 6 W TDP = D3714-R1, horizontal position) -10 °C ... +40 °C (max. 10 W TDP, vertical position only) *** Active Cooling: -10 °C ... +40 °C (up to 25 W TDP, any position)
	HUMIDITY	5 % - 85 % relative humidity (non-condensing)
APPROVALS & CERTIFICATIONS	EMC	CE Class B, Industrial Immunity (EN 61000-6-2), FCC Class B verified
PACKAGE CONTENT		Chassis desk stand (vertical mode, removable) Rubber feet (horizontal mode, removable) Chassis bottom/top incl. front bezel; Rear I/O with integrated EMI gasket
CHASSIS FEATURES	THEFT PROTECTION MOUNTING OPTIONS	Kensington lock support Integrated WLAN antennas Wall Mount VESA Kit DC-in holder Cooling solution Rear COM port (incl. RS-232, RS-422, RS-485) ****
REQUIREMENTS FOR AC ADAPTER	SAFETY	Compliance with IEC 62368-1 according clause 6.2.2. to power source category PS2 ("Limited Power Source") required!

* Chassis ambient temperature; upper limit depends on system configuration
 ** Limited cooling performance in horizontal operating mode; possible system performance reduction. TDP setting \approx 8W recommended
 *** Vertical operating position recommended for most favorable cooling & system performance
 **** Available for motherboard versions up to 3 rear graphics ports only



F5000-C022

- Specific passive heatsink designed for SMARTCASE™ S511
- Max. 10 W TDP
- Weight ~ 200 g



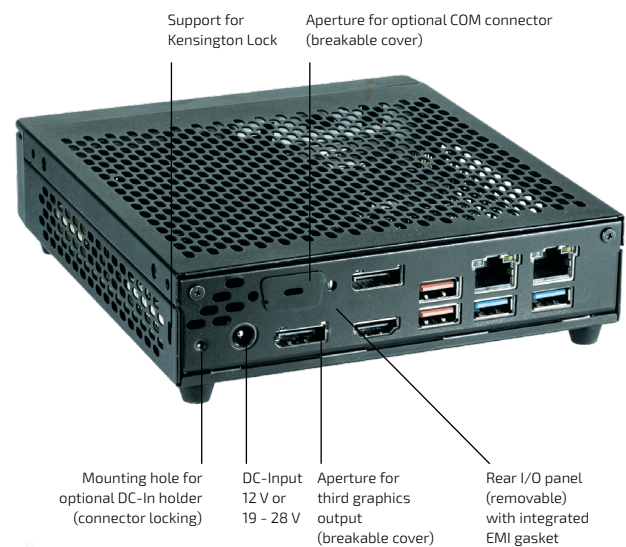
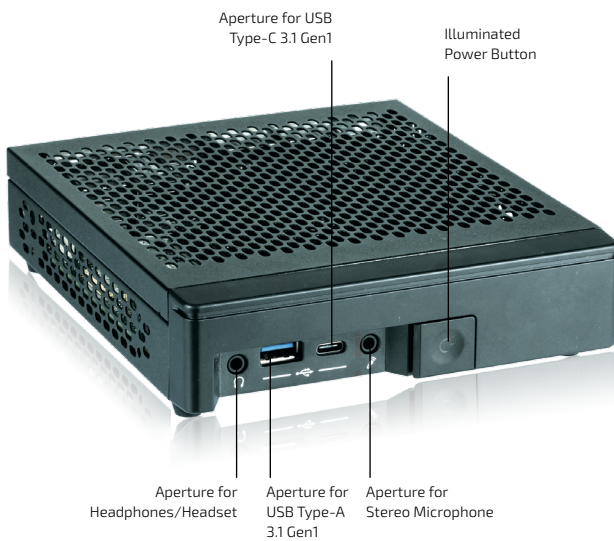
F5000-C023

- Specific active heatsink designed for SMARTCASE™ S511
- Max. 25 W TDP
- Weight ~ 200 g



Chassis Front/Rear View (Horizontal Position)

Motherboard D3714-R installed



Overview Chassis Configuration/Options

	D3714-R1	D3714-R2	D3714-V2	D3724-R1	D3724-R2	D3724-R3
SMARTCASE™ S511 Rev. 01	yes	yes	-	yes	-	-
SMARTCASE™ S511 Rev. 02	yes	yes	yes	yes	yes	yes
Chassis Rear Wall (up to 3 x Graphics + COM) included in chassis kit	yes	yes	-	yes	-	-
Specific Chassis Rear Wall (4 x Graphics) Included from SMARTCASE S511 Rev.02!	-	-	yes	-	yes	yes
Passive Cooling (F5000-C022) supported	yes	yes	-	-	-	-
Active Cooling (F5000-C023) supported	yes	yes	yes	yes	yes	yes
Rear COM Port Option S26361-F5000-K007 supported	yes	yes	-	yes	-	-

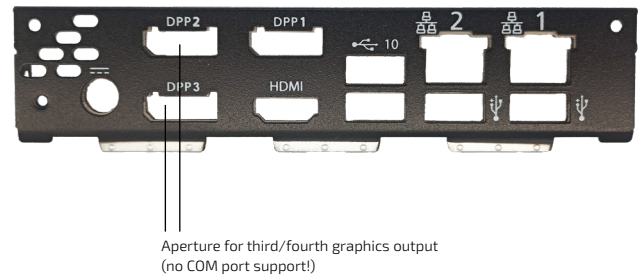
Following motherboard versions provide four rear graphics ports:

- D3714-V2
- D3724-R2
- D3724-R3

They require a different rear chassis wall for SC-S511.

This additional chassis wall (K-K1056-B622) is included from SMARTCASE™ S511 Rev. 02 chassis kit.

Furthermore, the chassis top cover had to be adjusted for assembly of the upper left graphics port. This change has also been implemented in SMARTCASE S511 chassis kit Rev. 02.



Ordering Information

ARTICLE	PART NO.	DESCRIPTION
SMARTCASE™ S511	F5000-J011*	10x chassis kit
CHASSIS REAR WALL (4x GRAPHICS PORT)	(K-K1056-B622)**	Mandatory for assembly of D3714-V2 or D3724-R2/-R3 in SC-S511 Rev.01 chassis
TOP COVER SC-S511 REV.B	(C26361-K1056-B51)**	Mandatory for assembly of D3714-V2 or D3724-R2/-R3 in SC-S511 Rev.01 chassis

Accessories

VESA MOUNTING KIT	S26361-F5000-X002	VESA adapter incl. mounting screws
AC ADAPTER 19V / 65W	S26361-F5000-P006	AC Adapter, 19 V/3.4 A, 65 W
INTERNAL WLAN ANTENNA KIT	S26361-F5000-W005	WLAN antenna kit; left (grey)/right (black) antennas incl. cable. M.2 WLAN module not included!
WALLMOUNT BRACKETS	S26361-F5000-X001	2x Brackets per chassis incl. screws
DC-IN HOLDER	S26361-F5000-X003	Holder incl. screws
HEATSINK	F5000-C022	Specific passive heatsink (max. 10 W TDP) for SMARTCASE™ S511
HEATSINK	F5000-C023	Specific active heatsink (max. 25 W TDP) for SMARTCASE™ S511
INTERNAL REAR COM PORT CABLE	S26361-F5000-K007	w/o slot bracket, length = 120 mm, 2 mm pitch internal connector

* Chassis Kit Rev. 01: Support for D3714-R1/-R2 and D3724-R1 only.
 Chassis Kit Rev. 02: Top cover adjusted (= Rev. B) for additional support of D3714-V2 and D3724-R2/-R3, and (additional) appropriate chassis rear wall included. Rev. 02 replaces Rev. 01.
 Chassis Kit Rev. 01 can be upgraded to Rev. 02 by replacing the chassis top cover by Rev. B top cover (C26361-K1056-B51) and adding the appropriate chassis rear wall (K-K1056-B622).

** Included in chassis kit Rev.02

Global Headquarters

Kontron Europe GmbH

Gutenbergstraße 2
 85737 Ismaning, Germany
 Tel.: + 49 821 4086-0
 info@kontron.com

www.kontron.com

